

CONSTRUCTION

Read these Drawing in conjunction with the Architectural Specification and the Construction Documents prepared by the Specialist Consultants listed below.

- Walls**
- Aluminium Joinery - Unless otherwise noted
 - Timber Framed Wall
 - Fire Rated Timber Framed Wall, Gib System GBTL 60 Refer to Fire Report for required ratings.
 - Masonry Block Wall
 - Precast Concrete Wall
 - Selected Stone Veneer over Versiflex Drainage Layer
 - 80mm Speedwall with Timber Strapping
 - 51mm Speedwall/Korok wall.

- Floors**
- Selected Timber Overlay Flooring
 - Selected Carpet Flooring
 - Selected Tile Flooring

-Floor thresholds level, no raw tile edges
 -Aluminium trim shall be square silver anodised
 Refer to Interior Designers Drawings for details of Interior Joinery and Fixtures

Ref.	Description	Date
3	General Revisions	30/10/2020
2	Issued for Construction	10/10/2019

REVISION SCHEDULE

ARCHITECT
MASON & WALES ARCHITECTS

STRUCTURAL, FIRE ENGINEER
HR Hadley & Robinson Ltd.
 Consulting Civil & Structural Engineers

ELECTRICAL, MECHANICAL, HYDRAULIC ENGINEER
cosgroves
 BRINGING BUILDINGS TO LIFE

SURVEYOR AND CIVIL ENGINEER
SOUTHERN LAND

GEOTECHNICAL ENGINEER
GEO SOLVE
 GEOTECHNICAL ENGINEERING

ACOUSTIC ENGINEER
acoustic engineering services

LANDSCAPE ARCHITECT
daxter design group

PROJECT
marina terrace
 — APARTMENTS —
 LAKESIDE ROAD, WANAKA
 for
 MARINA TERRACE 2015 LP

BUILDING 8 QUAYSIDE

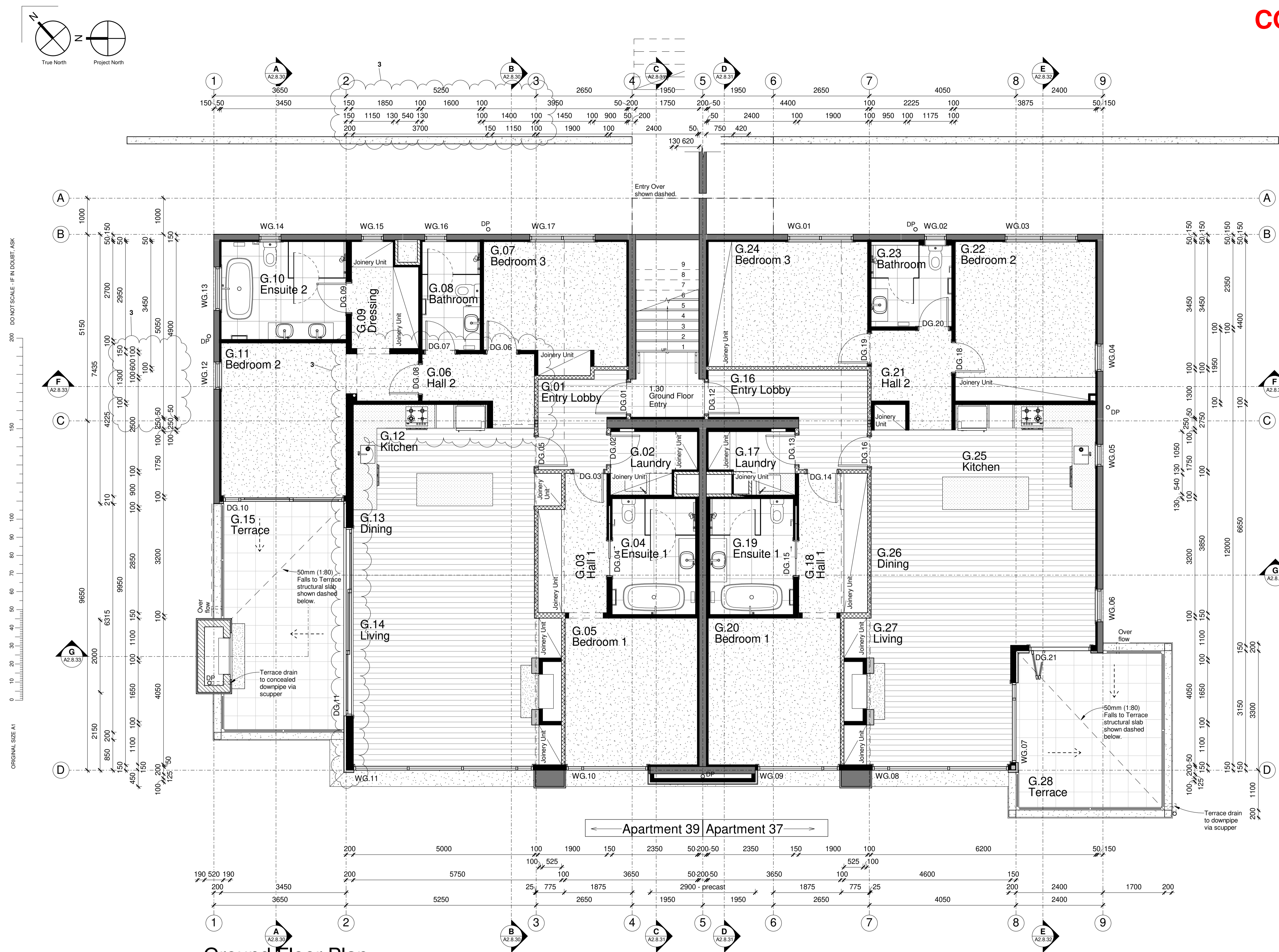
DRAWING TITLE
Ground Floor Apartment Plan

PROJECT STATUS
ISSUE FOR CONSTRUCTION

SCALE PROJECT NO.
 1:50 @ A1, 1:100 @ A3 5566

DRAWING NO. REVISION DATE
A2.8.01 3 30/10/2020

THE CONTRACTOR SHALL VERIFY ALL DIMENSIONS ON SITE BEFORE COMMENCING ANY WORK. THE DRAWINGS AND THE DESIGN IT COVERS ARE COPYRIGHT AND MAY NOT BE REPRODUCED WITHOUT WRITTEN APPROVAL.



ORIGINAL SIZE A1

200 DO NOT SCALE - IF IN DOUBT, ASK

Ground Floor Plan