

CONSTRUCTION

Read these Drawing in conjunction with the Architectural Specification and the Construction Documents prepared by the Specialist Consultants listed below.

Legend

- Walls**
- Aluminium Joinery - Unless otherwise noted
 - Timber Framed Wall
 - Fire Rated Timber Framed Wall, Gib System GBTL 60 Refer to Fire Report for required ratings.
 - Masonry Block Wall
 - Precast Concrete Wall
 - Selected Stone Veneer over Versiflex Drainage Layer
 - 80mm Speedwall with Timber Strapping
- Floors**
- Selected Timber Overlay Flooring
 - Selected Exposed Aggregate Floor covering with 'Tile' joints as indicated. Confirm Setout on Site.
 - Selected Tile Flooring

Refer to Interior Designers Drawings for details of Interior Joinery and Fixtures

Ref.	Description	Date
2	Ensuite 1 Glass Shower Doors Swung Opposite Way - All Apartments	03/12/2019
1	Issue For Construction	30/09/2019

REVISION SCHEDULE

ARCHITECT
MASON & WALES ARCHITECTS

STRUCTURAL, FIRE ENGINEER
HR Hadley & Robinson Ltd.
Consulting Civil & Structural Engineers

ELECTRICAL, MECHANICAL, HYDRAULIC ENGINEER
cosgroves
BRINGING BUILDINGS TO LIFE

SURVEYOR AND CIVIL ENGINEER
SOUTHERN LAND

GEOTECHNICAL ENGINEER
GEO SOLVE
GEOTECHNICAL ENGINEERING

ACOUSTIC ENGINEER
acoustic engineering services

LANDSCAPE ARCHITECT
dexter design group

PROJECT
marina terrace
— APARTMENTS —
LAKESIDE ROAD, WANAKA
for
MARINA TERRACE 2015 LP

BUILDING 6 NAVIGATOR

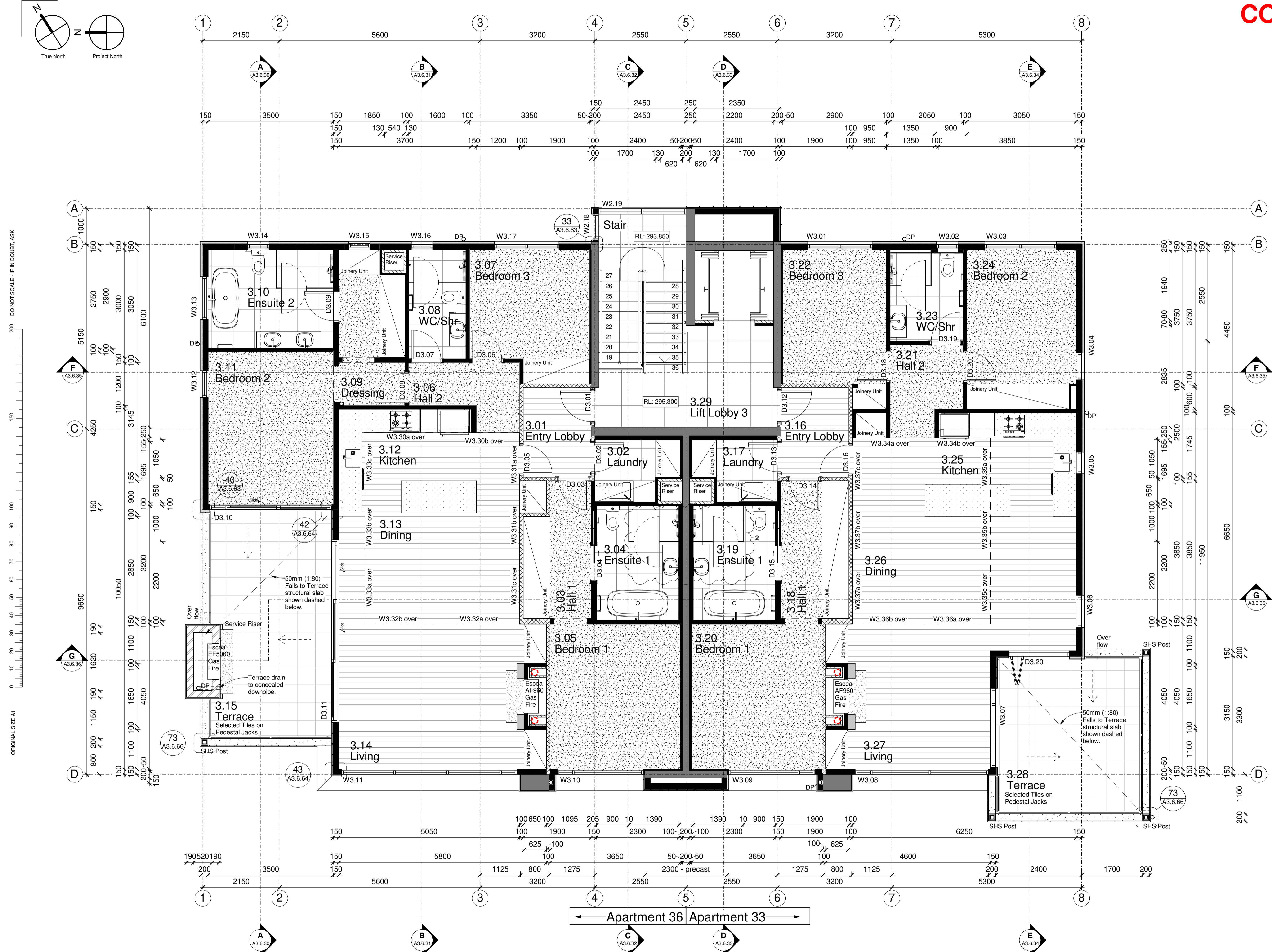
DRAWING TITLE
Third Floor Apartment Plan

PROJECT STATUS
CONSTRUCTION

SCALE PROJECT NO.
1:50 @ A1, 1:100 @ A3 5566

DRAWING NO. REVISION DATE
A3.6.04 2 03/12/2019

THE CONTRACTOR SHALL VERIFY ALL DIMENSIONS ON SITE BEFORE COMMENCING ANY WORK. THE DRAWINGS AND THE DESIGN IT COVERS ARE COPYRIGHT AND MAY NOT BE REPRODUCED WITHOUT WRITTEN APPROVAL.



ORIGINAL SIZE A1
DO NOT SCALE - IF IN DOUBT, ASK

Third Floor Plan