

CONSTRUCTION

Read these Drawing in conjunction with the Architectural Specification and the Construction Documents prepared by the Specialist Consultants listed below.

Legend

- Walls**
- Aluminium Joinery - Unless otherwise noted
 - Timber Framed Wall
 - Fire Rated Timber Framed Wall, Gab System G3T1 60 Refer to Fire Report for required ratings.
 - Masonry Block Wall
 - Precast Concrete Wall
 - Selected Stone Veneer over Versiflex Drainage Layer
 - 80mm Speedwall with Timber Strapping
- Floors**
- Selected Timber Overlay Flooring
 - Selected Exposed Aggregate Floor covering with 'Tile' joints as indicated. Confirm Setout on Site.
 - Selected Tile Flooring

Refer to Interior Designers Drawings for details of Interior Joinery and Fixtures

Ref.	Description	Date
5	General Revisions	30/10/2020
4	Glass door removed from 2.10 - Ensuite	20/12/2019
	2 Apartment 35	

REVISION SCHEDULE

ARCHITECT
MASON & WALES ARCHITECTS

STRUCTURAL, FIRE ENGINEER
HA Hadley & Robinson Ltd.
Consulting Civil & Structural Engineers

ELECTRICAL, MECHANICAL, HYDRAULIC ENGINEER
cosgroves
BRINGING BUILDINGS TO LIFE

SURVEYOR AND CIVIL ENGINEER
SOUTHERN LAND

GEOTECHNICAL ENGINEER
GEO SOLVE
GEOTECHNICAL ENGINEERING

ACOUSTIC ENGINEER
acoustic engineering services

LANDSCAPE ARCHITECT
daxter design group

PROJECT
marina terrace
— APARTMENTS —
LAKESIDE ROAD, WANAKA
for
MARINA TERRACE 2015 LP
BUILDING 6
NAVIGATOR

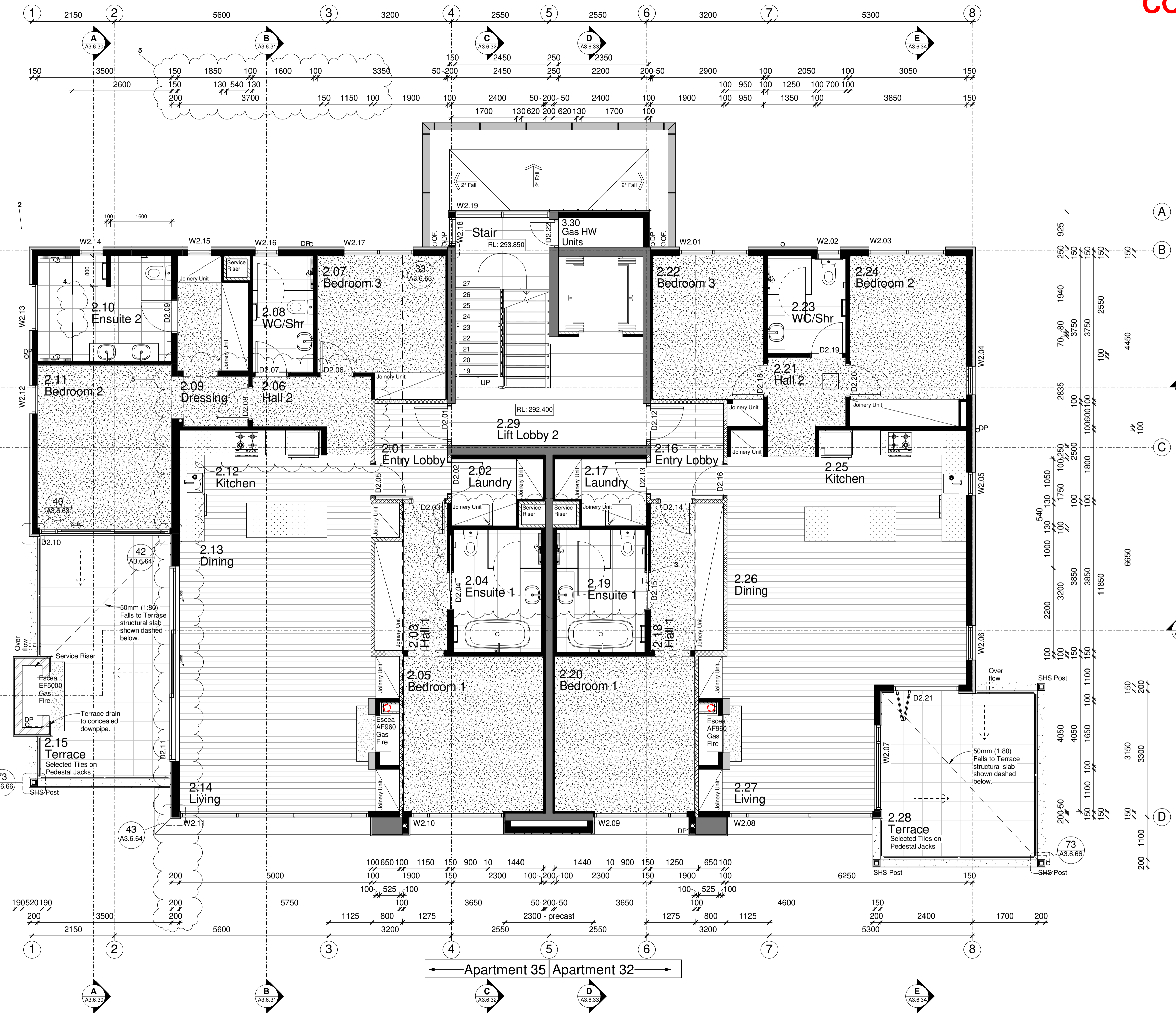
DRAWING TITLE
Second Floor Apartment Plan

PROJECT STATUS
CONSTRUCTION

SCALE 1:50 @ A1, 1:100 @ A3
PROJECT NO. 5566
DRAWING NO. A3.6.03 5
REVISION 5
DATE 30/10/2020

THE CONTRACTOR SHALL VERIFY ALL DIMENSIONS ON SITE BEFORE COMMENCING ANY WORK. THE DRAWINGS AND THE DESIGN IT COVERS ARE COPYRIGHT AND MAY NOT BE REPRODUCED WITHOUT WRITTEN APPROVAL.

ORIGINAL SIZE A1
DO NOT SCALE - IF IN DOUBT, ASK



Second Floor Plan

← Apartment 35 Apartment 32 →